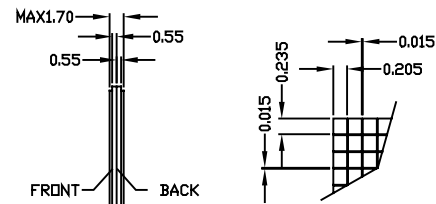
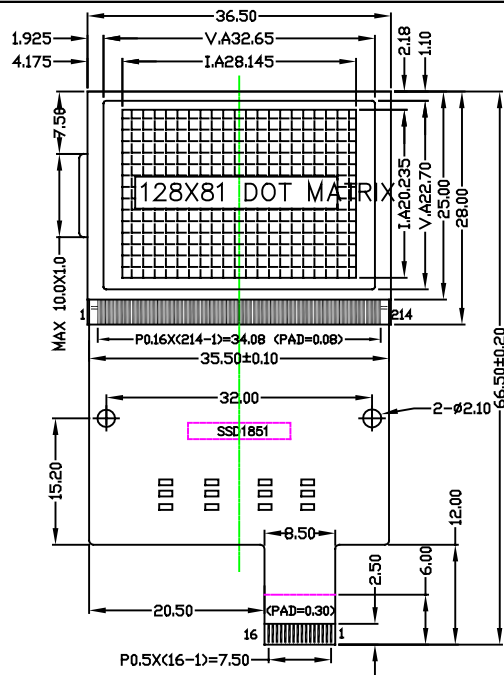


① EXTERNAL DIMENSION



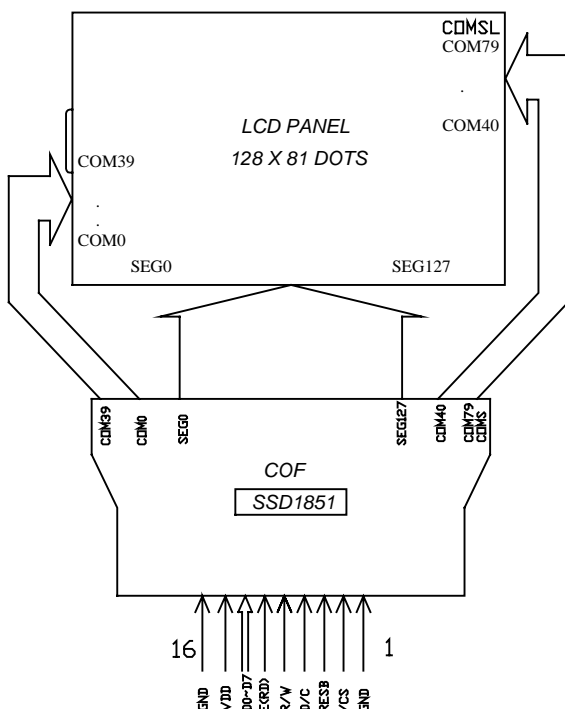
NOTE:

1. ALL DIMENSION ARE IN mm
2. GLASS THICKNESS:
FRONT -- 0.55
BACK -- 0.55
3. VIEWING ANGLE: 6 O'CLOCK
4. FLUID SPECIFICATION:
MULTIPLEX LEVEL -- 1/81 DUTY 1/10 BIAS
DRIVING VOLTAGE -- VDD=2.7V VLCD=12V
OPERATING TEMPERATURE: -20°C TO 70°C
STORAGE TEMPERATURE: -40°C TO 85°C
5. FSTN ,BLACK & WHITE AND TRANSFLECTIVE MODE
6. CONNECTOR: COF

② MECHANICAL DATA

ITEM	SPECIFICATION	UNIT
Module Size (W X H X T)	36.50 X 66.50 X 1.70	mm
Viewing Area (W X H)	32.65 X 22.70	mm
Internal Area (W X H)	28.145 X 20.235	mm
Dot Pitch (W X H)	0.22 X 0.25	mm
Dot Size (W X H)	0.205 X 0.235	mm
Number of Dots (W X H)	128 X 81	dots

④ BLOCK DIAGRAM



③ PIN CONFIGURATION

ITEM	SYMBOL	DESCRIPTION
1	GND	Ground
2	/CS	Chip select input
3	/RES	Reset input pin
4	D/C	Control/display data input control flag
5	R/W	Read/Write execution control pin
6	E	Enable R/W
7	DB0	Data bus
8	DB1	
9	DB2	
10	DB3	
11	DB4	
12	DB5	
13	DB6(SCK)	
14	DB7(SDA)	
15	VDD	Power supply voltage
16	GND	Ground

⑤ ABSOLUTE MAXIMUM RATINGS(25°C)

PARAMETER	SYMBOL	Standard Value	UNIT
Supply Voltage Logic	VDD	2.7	V
LCD Driving Voltage	VLCD	12.0	V
Input Voltage	VIN	VSS<=VIN<=VDD	V